

A lighthouse on a rocky island at sunset. The lighthouse is white with a green band and a black lantern room. The sky is a mix of pink, purple, and blue. The ocean is dark blue with white foam from waves. The text is overlaid on the right side of the image.

City of Santa Cruz Police Department Fiscal Year 2021 Budget

Mission Statement

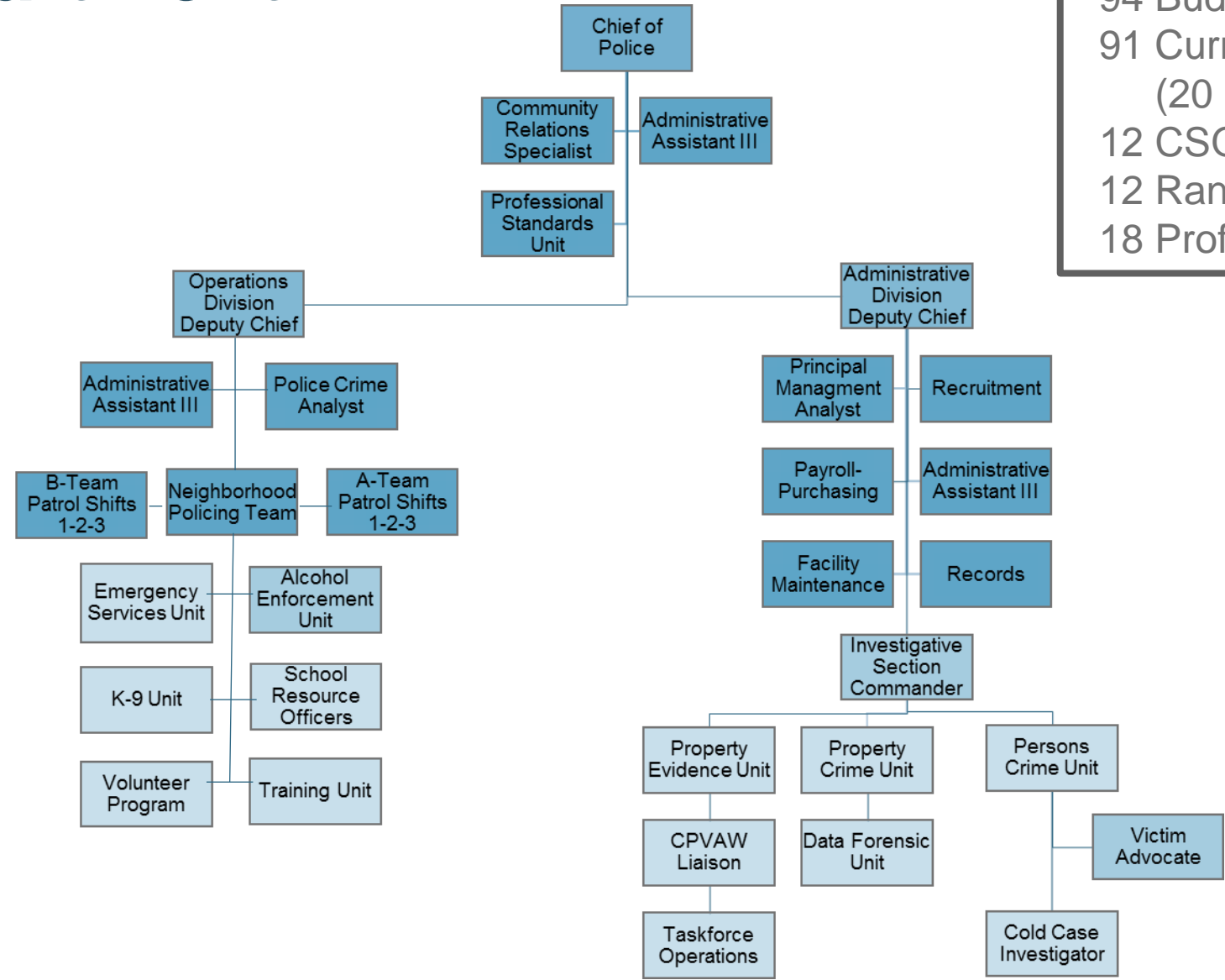
*SCPD is committed to serve **selflessly** and **compassionately** through **collaboration** and **innovation**. We will relentlessly pursue criminals to protect all lives and the property of all within our community. We chose to be **transparent** and **responsive**, while striving for **excellence**.*

Agenda

- Department Overview
- Top FY 2020 Achievements
- Core Services
- Working / Status Quo Budget
- Unavoidable Non-Status Quo Aspects of Our Budget

Police Department

102 Authorized Sworn
 94 Budgeted Sworn
 91 Current Sworn
 (20 Backgrounds)
 12 CSO's
 12 Rangers
 18 Professional Staff



2019 Hiring Stats:

- 433 Applicants Screened
- 45 Background Checks
- Hired 20 Uniformed Staff

SCPD is committed to serve selflessly and compassionately...



**Top FY 2020 Achievements:
H.E.R.O & Neighborhood Policing Teams**

*...through collaboration
and innovation...*

Top FY 2020 Achievements Threat Assessment and De-Escalation



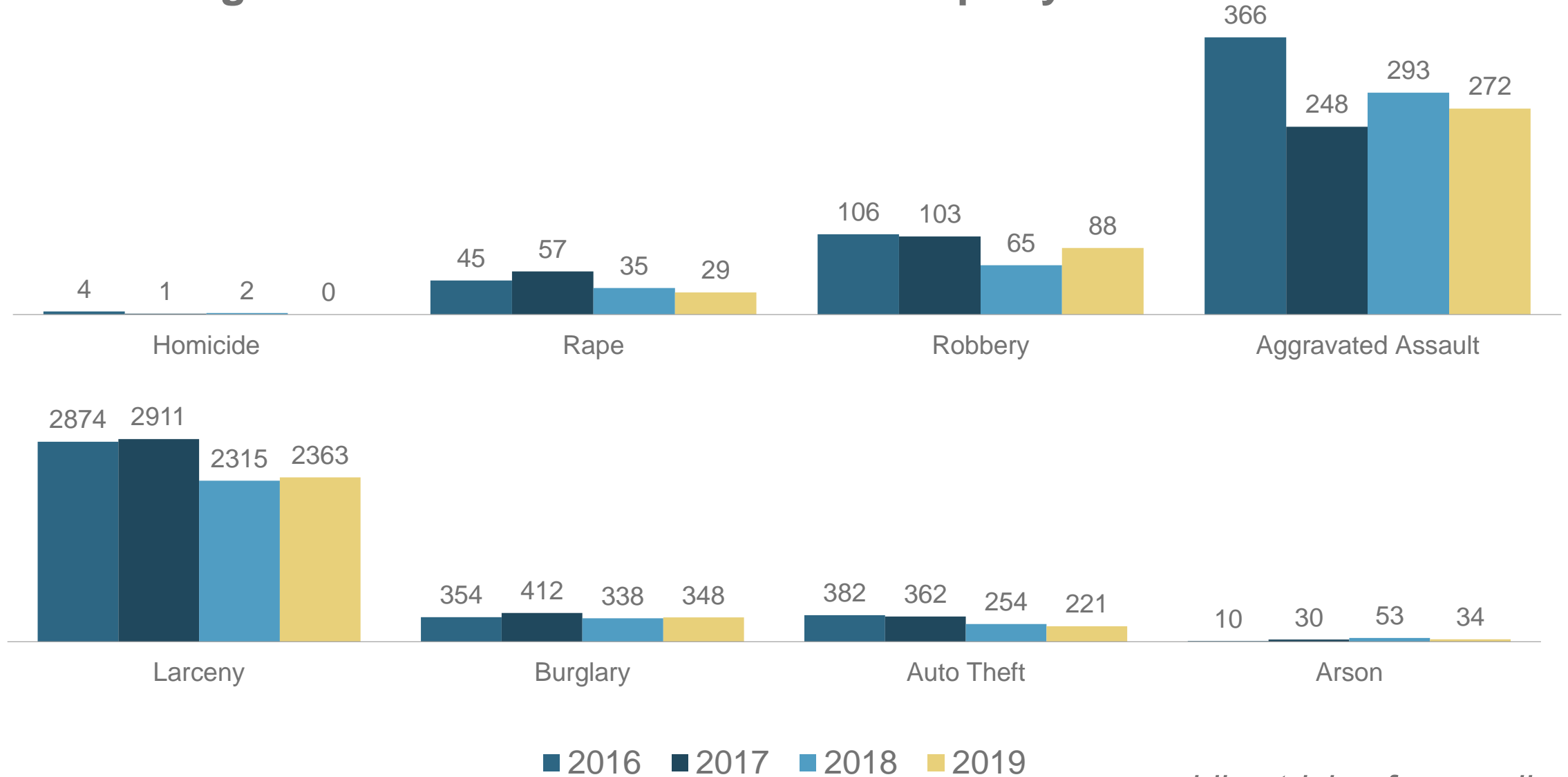
We chose to be transparent and responsive...



Top FY 2020 Achievements Volunteer Program

Top FY 2020 Achievements

Continuing Downward Trend of Violent & Property Crime



...while striving for excellence.

Core Services



Enforcement

- Patrol
- H.E.R.O Team
- NPT Team
- Alcohol Enforcement Unit
- School Resource Officer
- Emergency Services Unit
- K-9 Unit



Investigations

- Persons Crime
- Property Crime
- Cold Case Investigation
- Victim Advocate
- Data Forensics
- Task Force Operations
- Property & Evidence



Community Involvement

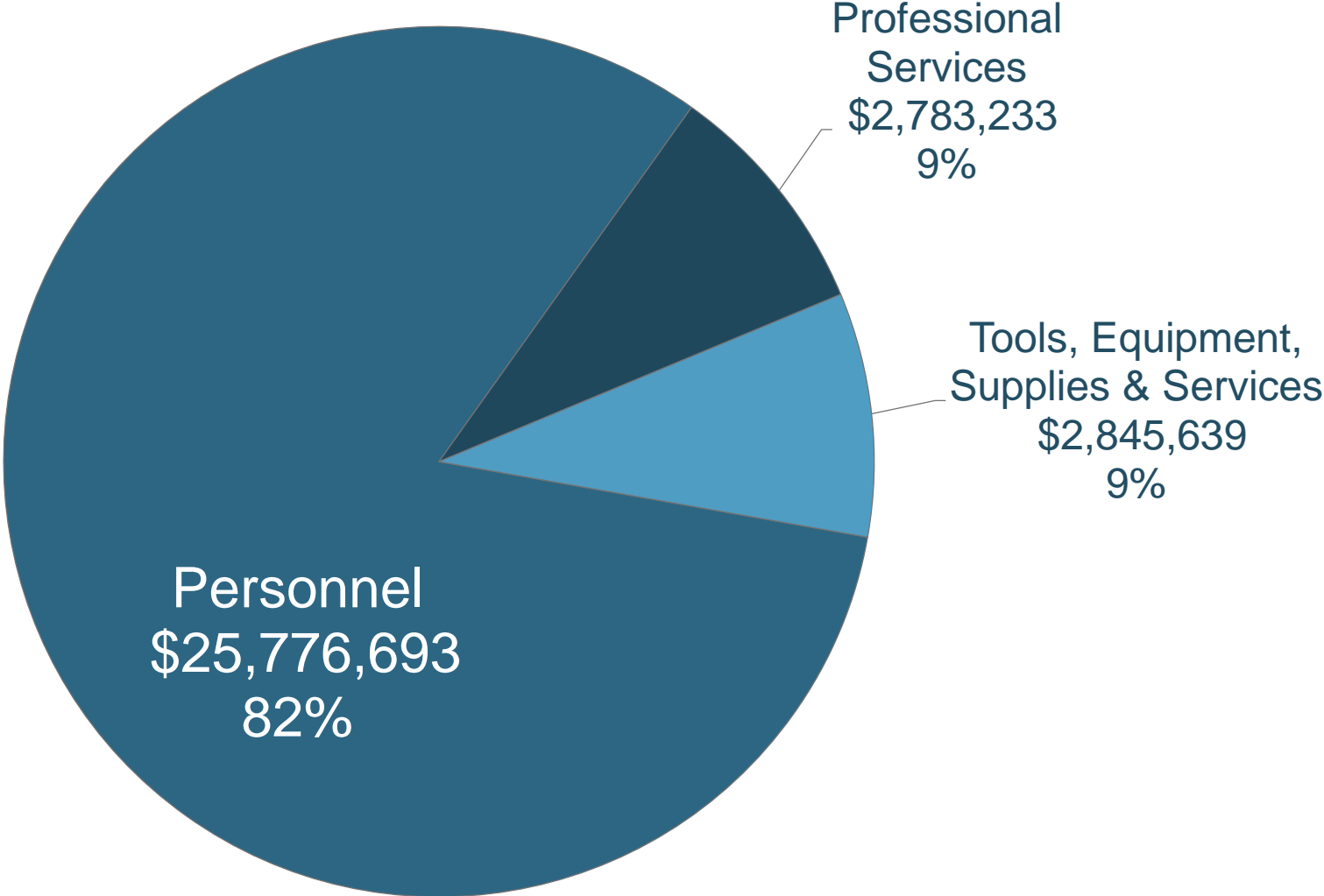
- Social Media
- SCPD Volunteers
- Walk-the-Block Program
- MLK March
- Beach Flats Community Outreach
- National Night Out



Records

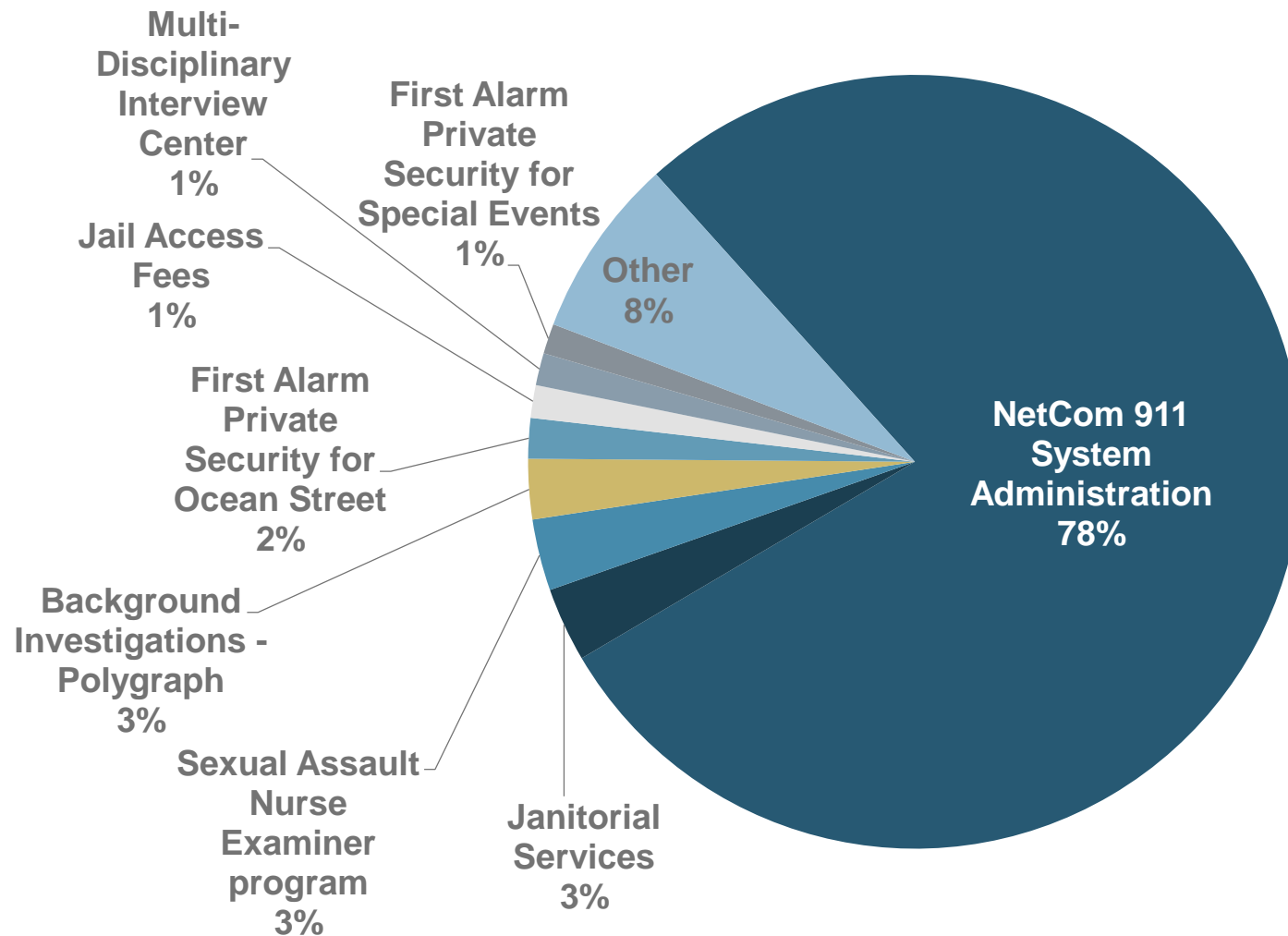
- Public Records Requests
- Process Officer Arrest Reports
- Process Citations
- Process on-line citizen reports
- Respond to public, other law enforcement agencies calls

Our Status Quo Budget



Our Status Quo Budget

Professional Services Contracts (9% of Total Budget)

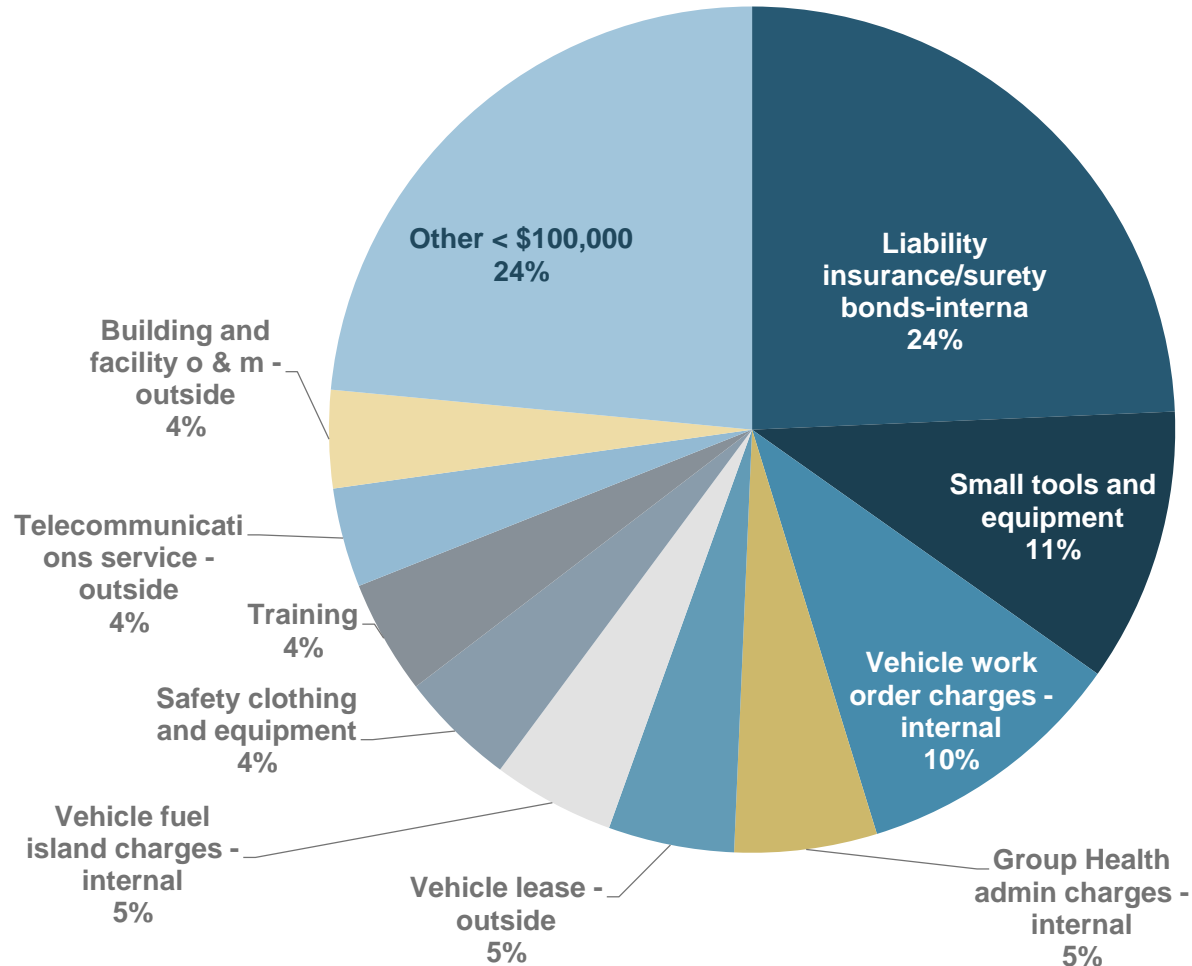


Other < 1%

Special Event-Outside Agency Assistance
Pre-Employment Medical Exams
First Alarm Private Security for Prisoner Watch/Etc.
Psychological Services (In Service)
Lexipol Policy Manual Update
K-9 Monthly Maintenance
Intervention and Prevention Specialist w/COE
Legal Services
K-9 Veterinary Services
Graphic Design Services
Critical Incident Debriefing
Stordok Document Shredding
Bio-Hazard Waste Clean-Up & Disposal
IA Transcription Service
Hazardous waste disposal
Credit Check Services
Bicycle Repairs & Service
Pepper Ball Maintenance
Abandoned Vehicle Abatement Tow Fees

Our Status Quo Budget

Tools, Equipment, Supplies & Services (9% of Total Budget)



Other Costs	
Solar power	70,000
Evidence processing	65,000
PC replacement program purchases	62,980
Miscellaneous supplies and services	52,896
P.O.S.T.-reimbursable training	50,000
Equip annual inventory charge - internal	44,719
Water, sewer and refuse	41,700
Office supplies	34,546
Radio operation/maintenance - outside	32,400
Uniform maintenance	30,000
Advertising	26,000
Task force operations	26,000
Equipment, building and land rentals	22,000
Travel and meetings	16,500
Natural gas	15,000
Printing and binding-outside	13,500
Office equipment operation/maint	12,000
Uniform supplies	10,500
Postage charges	10,000
Gang intervention program expenses	10,000
Dues and memberships	5,500
Radio operation/maintenance - internal	5,000
Alarm monitoring services	4,500
Computer supplies	3,500
Books and periodicals	3,000
Merchant bank fees	1,600
Hazardous materials disposal	600
Governmental fees	500

What's Not Status Quo

Unavoidable Non-Status Quo Increase 
Netcom / 911 Contract = \$30,006



A photograph of a white lighthouse with a green band and a black lantern room, situated on a rocky pier extending into the ocean. The sky is a soft mix of pink, purple, and blue, suggesting sunset or sunrise. The water in the foreground is blurred, showing white foam from waves. The text "What Questions Do You Have?" is overlaid in white, bold, sans-serif font in the upper right quadrant. On the left side of the image, there are two vertical bars: a teal one at the top and a yellow one below it.

What Questions Do You Have?